

N S R H N

Northern Sierra Rural Health Network

Redwood Health Information Collaborative Meeting

December 19, 2007



Welcome

Ezequiel Sandoval

Consultant

Infinite Consulting Services

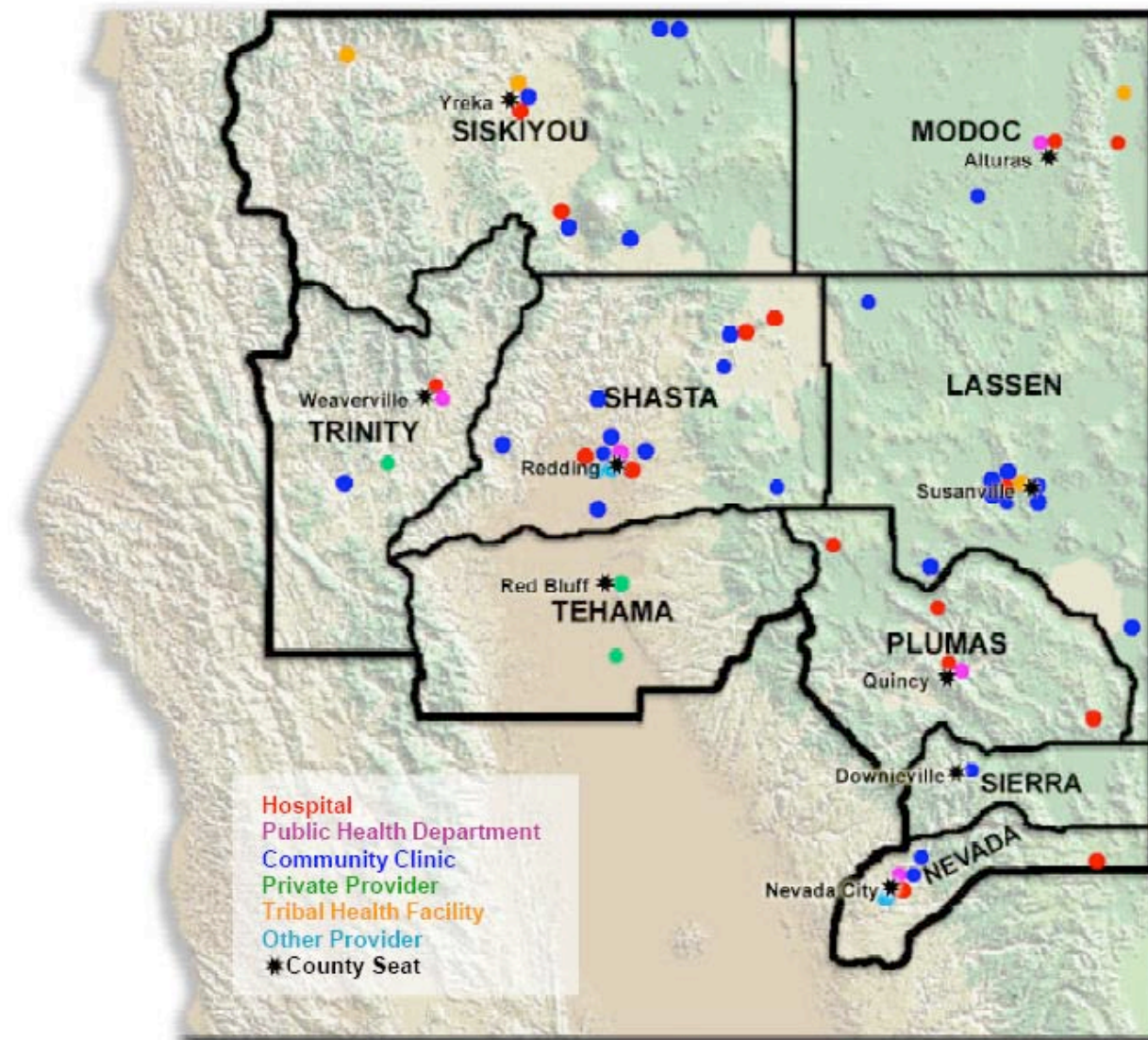
Chief Information Officer

*Northern Sierra Rural Health
Network*



NSRHN Service Area & Participants

- NSRHN service area: 30,000 sq. mi.
- Pop: 435K
- 80% designated rural or frontier
- Over 50 rural health provider members



Rural Challenges

- Lack of locally available IT support
- Lack of affordable connectivity
- Predominance of public payers (Medi-Cal, Medicare)
- Large number of uninsured patients
- Geographic isolation from tertiary health care systems, health care payers and policy makers



HIE Projects

- Promoting Rural Health Care Quality through the Effective Use of Information Technology Project
- RHIO Readiness Project



Technology Partners



- Manatt Health Solutions



- illumisys



Program Mission

The NSRHN RHIO Readiness Project aims to ensure that rural and safety net providers can participate in the development of regional, state, and national health information exchange (HIE) initiatives that will benefit underserved rural communities.

NSRHN RHIO Readiness program was funded by:
The Blue Shield of California Foundation



Program Approach

Organizational Assessments

Community Clinics

Rural Hospitals

Physician Offices

Community Stakeholder Meetings



EHR Education

Organizational Readiness

Planning Discussion

Final Meeting
3/21/2007

RHIO Implementation Plan

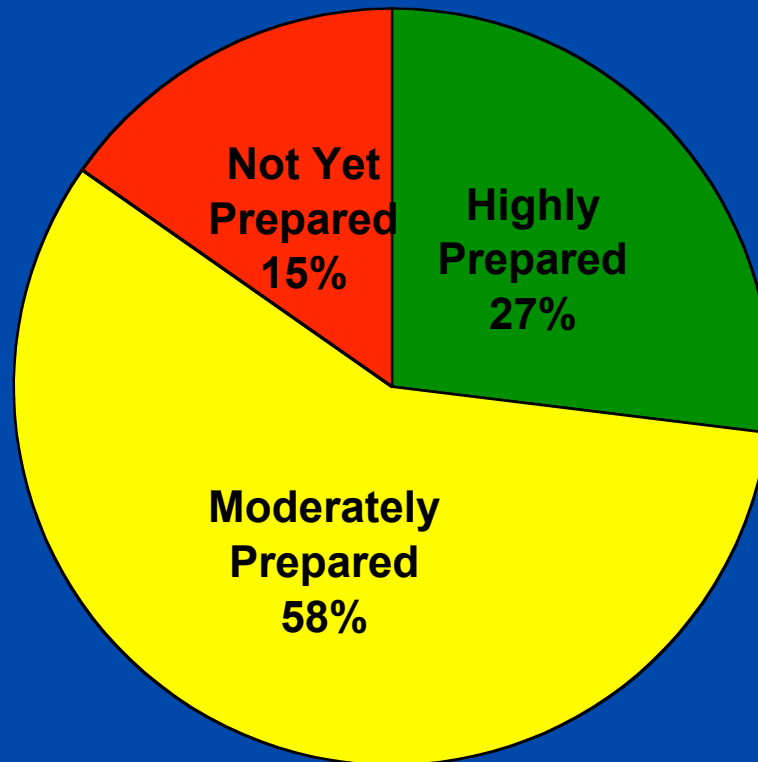


Assessment Scope

- All 9 counties covered by NSRHN
- Clinics
 - 100% of safety net clinics are NSRHN members
 - 76% of clinic members completed an assessment
- Rural Hospitals
 - 100% of rural hospitals in the region are NSRHN members
 - 77% of rural hospital members completed an assessment



Readiness Assessment Findings: NSRHN Region



Field Preparedness by Health IT Application

Low-impact applications

Workflow-enabling applications

Comprehensive applications

Immunization Registry

Remote Access to PHI

ePrescribing

Chronic Disease Management System

Electronic Health Records

Most of the field may be prepared

Some of the field may be prepared

Less of the field may be prepared

The majority of the field is moderately or less prepared for EHR adoption today. However, readiness for incremental or "stepping stone" functionality is promising based on assessment results.

Focusing on Program Options

- Community meetings and videoconferences focused options on 3 program models:
 - ePrescribing and Medication Management
 - Regional Disease Management
 - Remote Access to Patient Health Information
- From model options presented, community leaders helped clarify direction



Promoting Rural Health Care Quality through the Effective Use of Information Technology

ePrescribing



Regional Disease Management



Remote Access to PHI



NSRHN Promoting Rural Health Care Quality project is funded by:

The Blue Shield of California Foundation



ePrescribing

- Improved workflow and communications between providers and pharmacies
- Reduction in number of prescription errors
- Reduction in number of Adverse Drug Events
- Proactive means of addressing the problem of drug-seeking behavior



ePrescribing

- Medi-Cal
 - Formulary
 - Eligibility
 - Medication History
- University of Arizona
 - The Impact of e-Prescribing in the Northern Sierra Rural Health Network

The evaluation project is funded by:
The California HealthCare Foundation



Regional Disease Management

- Manage diabetic populations consistently across providers
- Build regional capacity and encourage participation in anticipation of Pay-for-Performance



Regional Disease Management

- Accelerating Quality Improvement through Collaboration (AQIC)

The ACIQ project is funded by:

**The California HealthCare Foundation through
The California Primary Care Association**



Remote Access to PHI

- Access inpatient health information post-discharge in rural and remote areas
- Achieve interconnectivity within region
- Share clinical information with partners on a timely basis



NSRHN
organization governance
project oversight
project workgroups

Northern Sierra Rural Health Network Board

Board Report

- Program Plan Summary
- Budget

HIE Committee

- Program Plan
- Escalated Issues and Action Items
- Budget

Committee Report

- Project Plan Update
- Escalated Issues

Remote Access to Patient Health Information Workgroup

- Project Plan
- Issue Log
- Action Items

Manatt

Regional Disease Management Workgroup

- Project Plan
- Issue Log
- Action Items

NSRHN

ePrescribing and Medication Management Workgroup

- Project Plan
- Issue Log
- Action Items

Illumisys

Medi-Cal Medication History and Formulary

- Project Plan
- Issue Log
- Action Items

Manatt



More Information

<http://www.nsrhn.org/HIE>



NSRHN HIE Program Contacts

Project Management, Disease Management:
Jan Phillips Sotka, NSRHN

- jan@nsrhn.org

Program Management, Remote Access to PHI:
Libby Sagara, Manatt Health Solutions

- lsagara@manatt.com

ePrescribing:
Eileen Doyle, Illumisys

- edoyle@illumisys.org

